

Installation Instructions

Eco-Brite® and Thermo-Foil® ES

Delivery and Site Handling

The products are delivered to site in rolls protected with foam, packed in clear polyethylene and sealed at each end. The rolls should be stored in clean, dry conditions not exposed to sunlight. The products must be protected from being dropped or crushed by objects. On site, to ensure maximum performance of the products when installed, precautions must be taken to protect them from dirt.

General

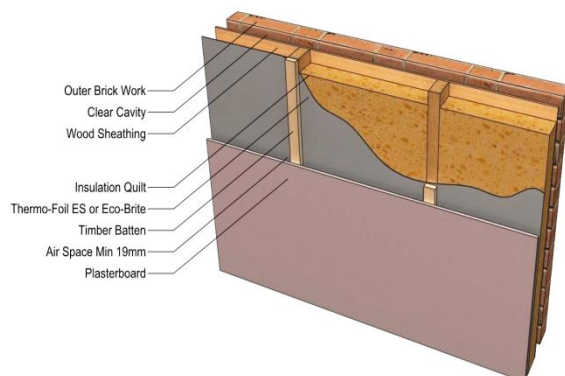
- During construction, care must be taken to ensure the products are not damaged during installation. Should damage occur by tearing, the products should be repaired or replaced.
- Joints, overlaps, areas around details and isolated puncture areas must be sealed with the tape.
- Prior to fixing the products, sufficient time must be allowed for the dispersion of solvents contained in some wood preservatives and damp-proofing treatments where applied. Backgrounds should be allowed to dry out before fixing the system.
- In bright sunlight sun glasses should be worn.
- The printed side of the product has the fire resistance surface.
- When used as a vapour control layer, the membrane must be fixed on the warm side of the insulation, covering all the internal area, including joists, rafters, rails, studs, noggings, window reveals, lintels and sills. All joints should coincide with battens, stubs or noggings, be lapped by at least 50 mm and sealed with tape. Flues should be appropriately sleeved where they penetrate the products.

Wall and Ceilings

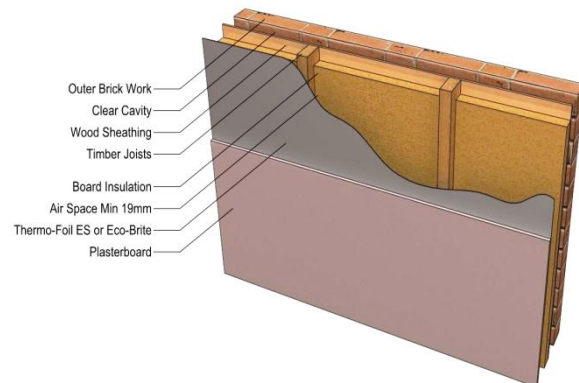
The membrane is rolled out to the required length and starting from the bottom and working upwards fixed into position, either nailed or stapled to timber battens/studs or by using self-drilling screws with bonded washers for metal constructions. Fixings should be at 250 mm maximum centres.

All joints should coincide with battens, metal furrings, studs and noggings and be lapped by at least 50 mm and sealed with the tape provided. The membrane should be cut and neatly fitted around door and window frames, and trimmed and fitted into corners. Holes should be cut neatly into the products to allow for services such as plumbing and electrical wiring to penetrate and any cuts should be repaired. Any gaps should also be sealed. The membrane should not cover ventilation sleeves and grille.

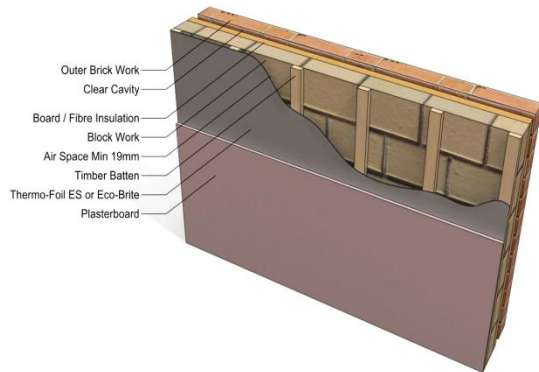
Timber Frame (Insulation Quilt)



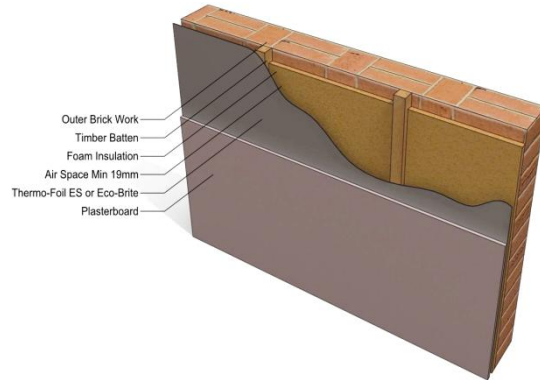
Timber Frame (Board Insulation)



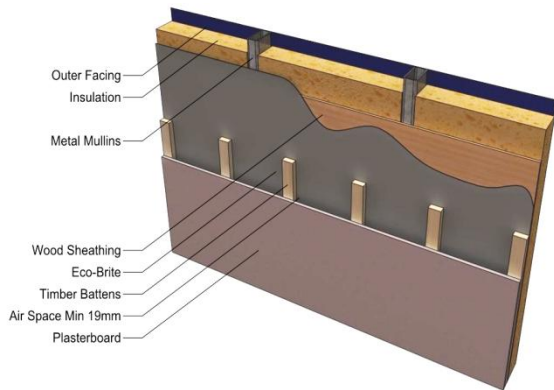
Masonry Wall



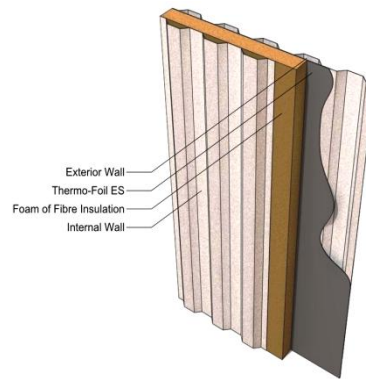
Masonry Wall (Refurbishment)



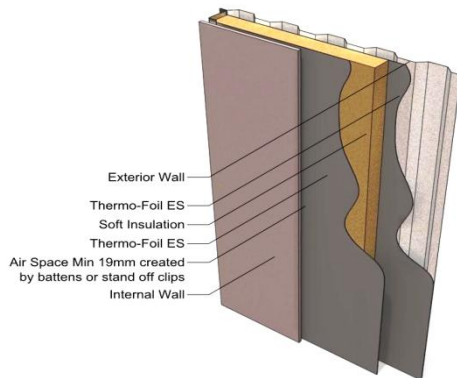
Modular / Portable Building



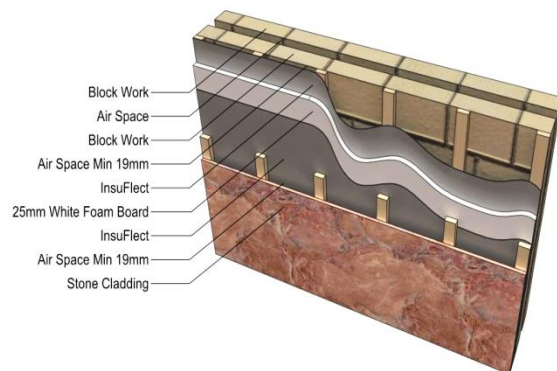
Metal Wall Profile



Cold Storage Facility



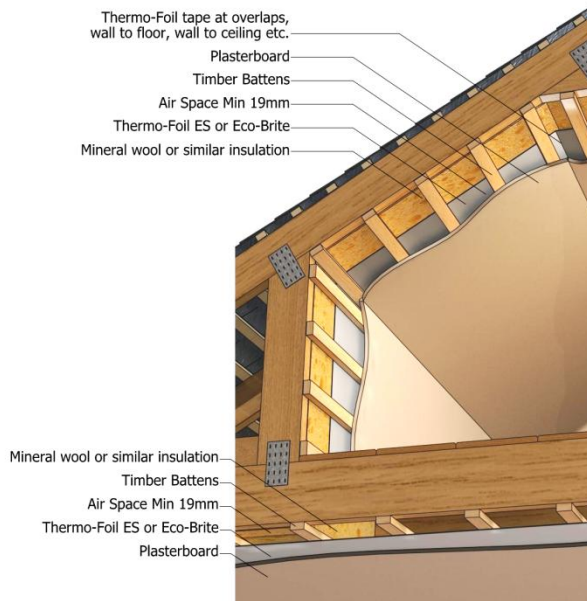
Block / Brick Construction – InsuFlect



Ceiling



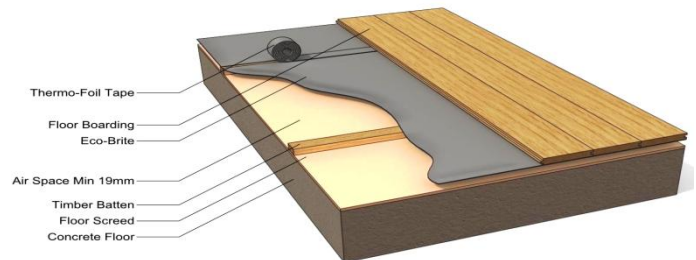
Attic Room



Floors

Ground Supported Floor

The membrane should be laid over the floor and sealed with the tape to ensure the total floor area is covered, ensuring that sufficient membrane is protruding to be held behind the skirting board (see Figure 6). Timber battens, size 19 mm or 25 mm by 38 mm, should be installed and fixed through the membrane into the concrete floor.



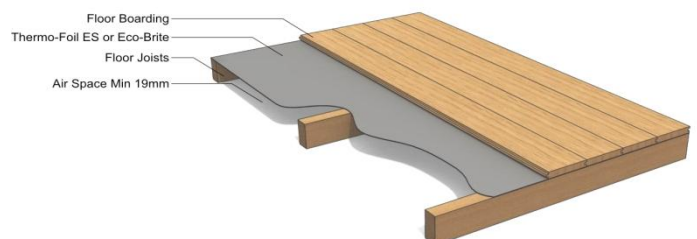
All laps should be a minimum of 100 mm. Laps, cut edges and roll ends must be sealed with the tape to ensure a gas-tight seal. All joints, perforations and damaged areas must be thoroughly and durably sealed to make the construction as gas-tight as possible. Airtight seals should also be provided at service penetrations.

Do not tape the product under a kitchen or bathroom (or any area where water could leak if appliances fail).

Suspended timber and suspended concrete ground floors

The products are fixed over the floor joists and/or battens, in the case of a timber raft, allowing an air gap between the product and insulation. Tongue-and-groove particle board flooring, softwood floor boarding or specified finish flooring is then installed in the conventional manner.

All laps should be a minimum of 100 mm. Laps, cut edges and roll ends must be sealed with the tape to ensure a gas-tight seal. All joints, perforations and damaged areas must be thoroughly and durably sealed to make the construction as gas-tight as possible. Airtight seals should also be provided at service penetrations.



It is important that damage does not occur to the barrier during installation and, when possible, steps should be taken to minimise damage to the barrier during construction, eg placing the barrier over the floor immediately before the laying of the finished flooring.

Intermediate/exposed floors

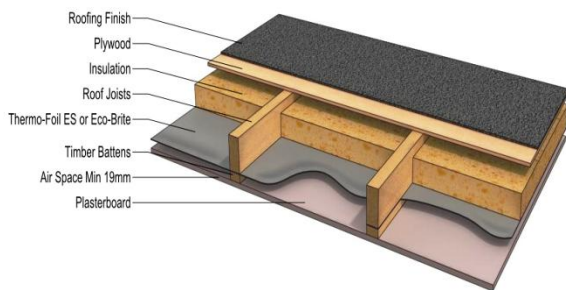
All the services should be incorporated beneath the existing floor, above the insulation if possible.

When the products are being used to restrict landfill and radon gas penetration (suspended concrete ground floors only) they must be linked to the cavity tray at the edges.

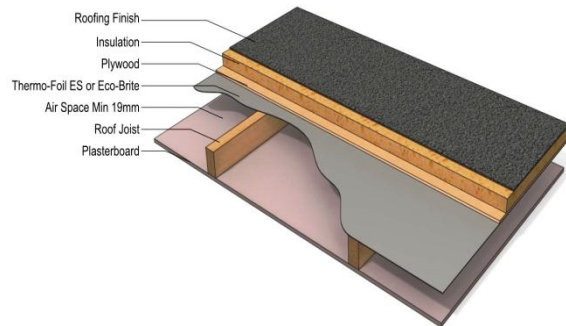
Roof tile underlay

Appropriate laps must be provided and securely taped. Typical installation details are shown in below. Hips and valleys should be covered with an additional strip of taped underlay. Tile roof applications must be adequately ventilated.

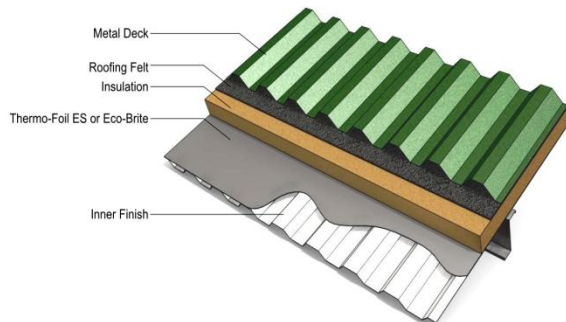
Flat Roof



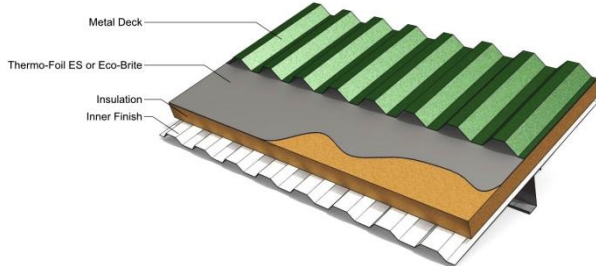
Flat Roof



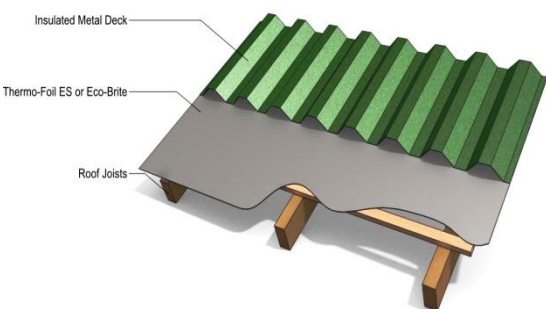
Metal Decks



Metal Decks – Hot Climates



Pitched Roof – Hot Climate



Flat Roof – Hot Climates

