

Eco-Brite<sup>®</sup> is a single foil membrane for use as a heat reflective lining within the fabric of homes, domestic and commercial building components including modular structures. Eco-Brite has an emissivity of only **0.03**, so **over 97.9%** of radiant heat is reflected back (hot or cold).

Every square metre used will save up to 23Kg of CO<sub>2</sub> per annum on an un-insulated wall and 12.33 Kg of CO<sub>2</sub> per annum on an insulated wall.

## Quality

Eco-Brite holds **BBA Certification (No. 08/4576)**, Fire certification to BS476 Part 6 and Part 7 and Dubai Municipality Certification, it has been designed and tested to last the lifetime of a house.

## Installation

To act as a radiant barrier Eco-Brite is installed within a structure facing at least one air space, (usually 19mm to 25mm).

When used in conjunction with mineral wool or foam insulation Eco-Brite can improve the u-value of that structure by up to 18%. Its inclusion will reduce the thickness of the soft insulation required, substantially minimising energy needs and improve comfort for occupants. Apollo's high performance adhesive tape can be used to seal the joints between adjacent sheets, around stud-work, door or window frames.

## Vapour Control Layer

The membrane is a complete vapour barrier, ideal to seal new or existing soft insulation. Ensuring insulation performance is not compromised by interstitial condensation, which can reduce insulation performance and may cause damage to the overall construction.

## Eco-Brite 's R Values

Wall 0.66 m<sup>2</sup>KW - Horizontal Heat Flow

Floor 1.33 m<sup>2</sup>KW - Downward Heat Flow

Ceiling 0.45 m<sup>2</sup>KW - Upwards Heat Flow

Pitched Roof 0.51 m<sup>2</sup>KW - Upwards Heat Flow



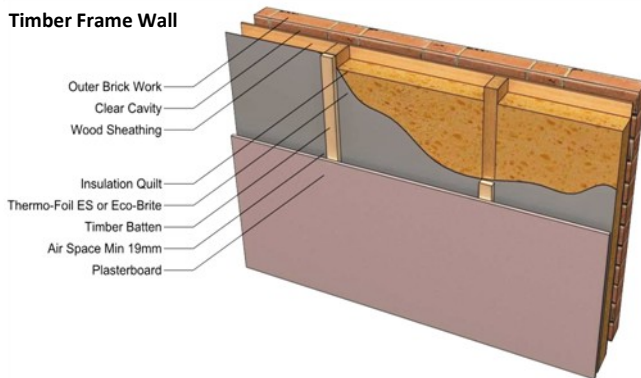
## Product Benefits

- Very low emissivity
- BBA Certified
- Fire Certificate to BS476 Part 6 and Part 7
- Excellent vapour barrier
- Helps to avoid condensation risk
- Reduces air leakage
- Corrosion and damage resistant reflective surface
- Excellent nail tear resistance
- Easy to use
- Full Technical Support available

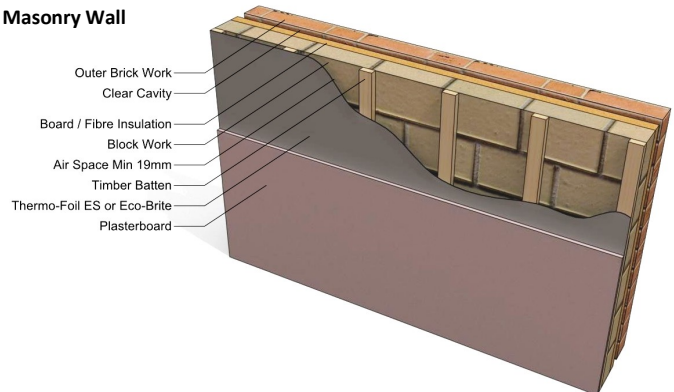


## Wall Installation

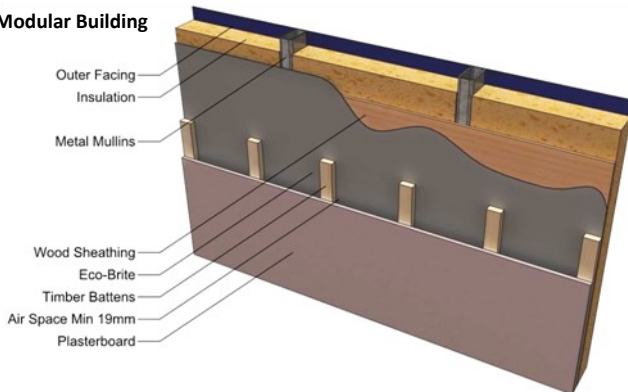
### Timber Frame Wall



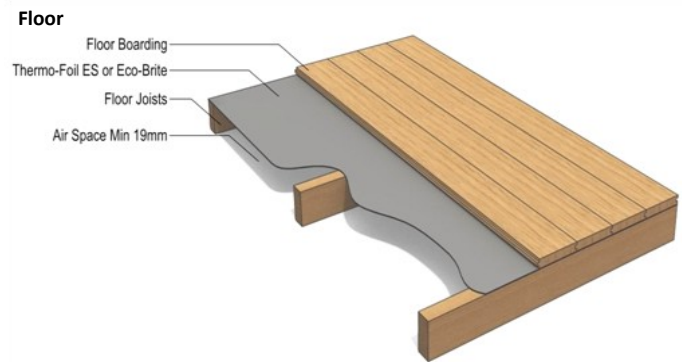
### Masonry Wall



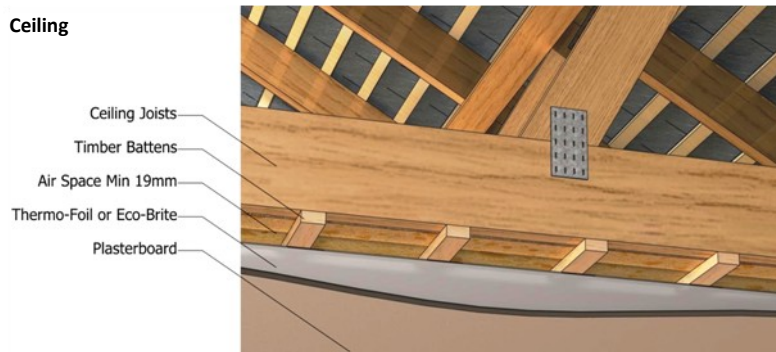
### Modular Building



### Floor



### Ceiling



## Technical Details

Reflectivity (ASTM E903)	over 97.90%
Emissivity (ASTM E408)	0.03
Carbon Emissions Saved	Up to 23kg per m2 /annum
Roll Size	96m x 1.25m 120m <sup>2</sup>
Nominal Thickness	135 microns
Tear Resistant (ASTM D882) Machine Direction (MD)	Tensile 3905N/m, Trouser tear 10.2N,
Tear Resistant (ASTM D882) Cross Direction (CD)	Tensile 4096N/m, Trouser tear 15.6N,
Beach Puncture Resistance (ASTM D774)	40.5kg-cm
Corrosion resistant	Unique surface coating
BS476 Part 6 Fire Propagation	Class 0
BS476 Part 7 Surface Flame Spread	Class 1